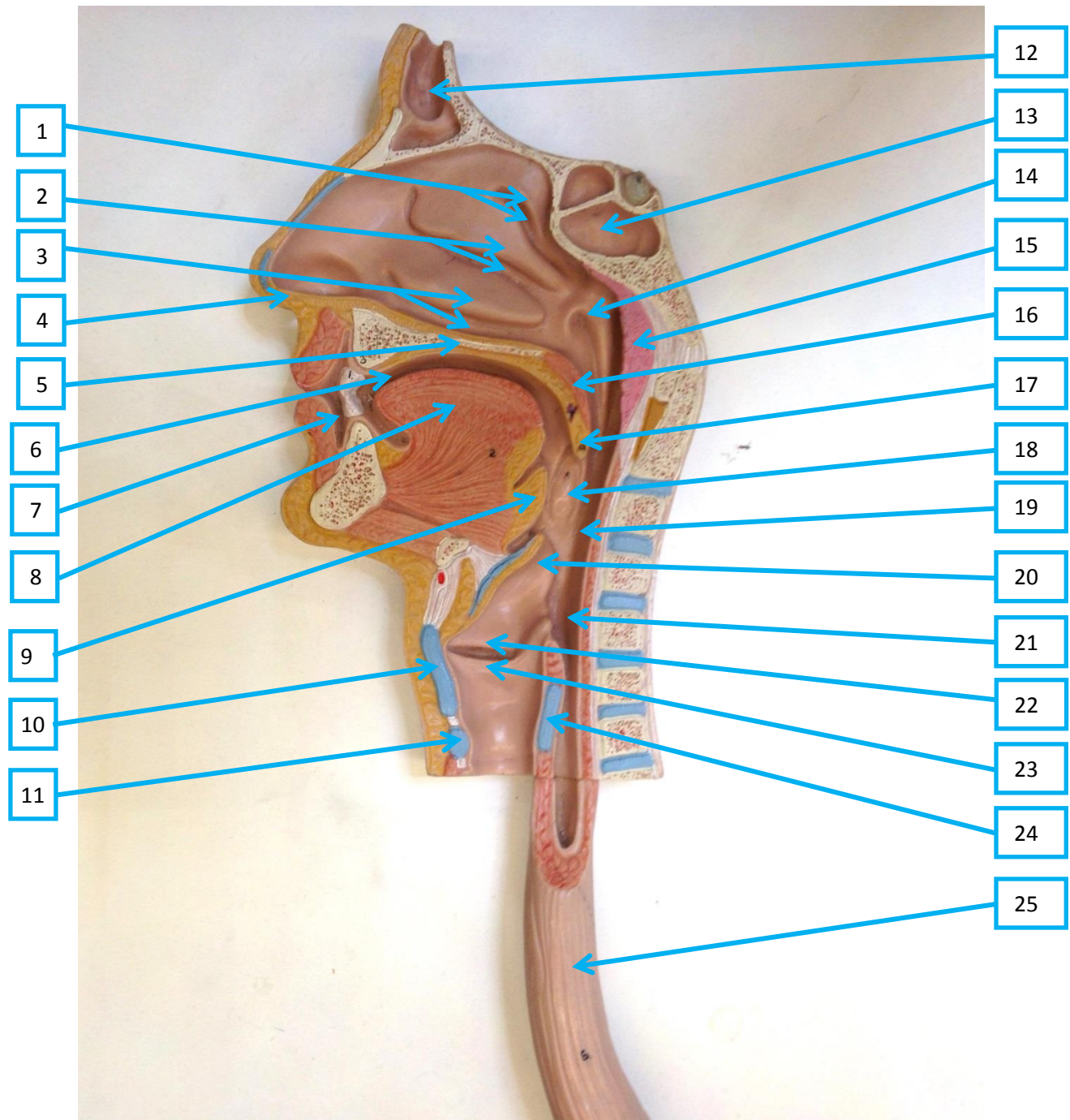


# Digestive System Model (upper 1/2)



## Key

1. Superior nasal concha and meatus
2. Middle nasal concha and meatus
3. Inferior nasal concha and meatus
4. External naris (nostril)
5. Hard palate
6. Oral cavity
7. Oral vestibule
8. Tongue
9. Lingual tonsil
10. Thyroid cartilage

11. Cricoid cartilage
12. Frontal sinus
13. Sphenoidal sinus
14. Opening of auditory tube into nasopharynx
15. Pharyngeal tonsil
16. Soft palate
17. Uvula
18. Palatine tonsil
19. Oropharynx

20. Epiglottis
21. Laryngopharynx
22. Vestibular (ventricular) fold (false vocal cord)
23. Vocal fold (true vocal cord)
24. Cricoid cartilage
25. Esophagus